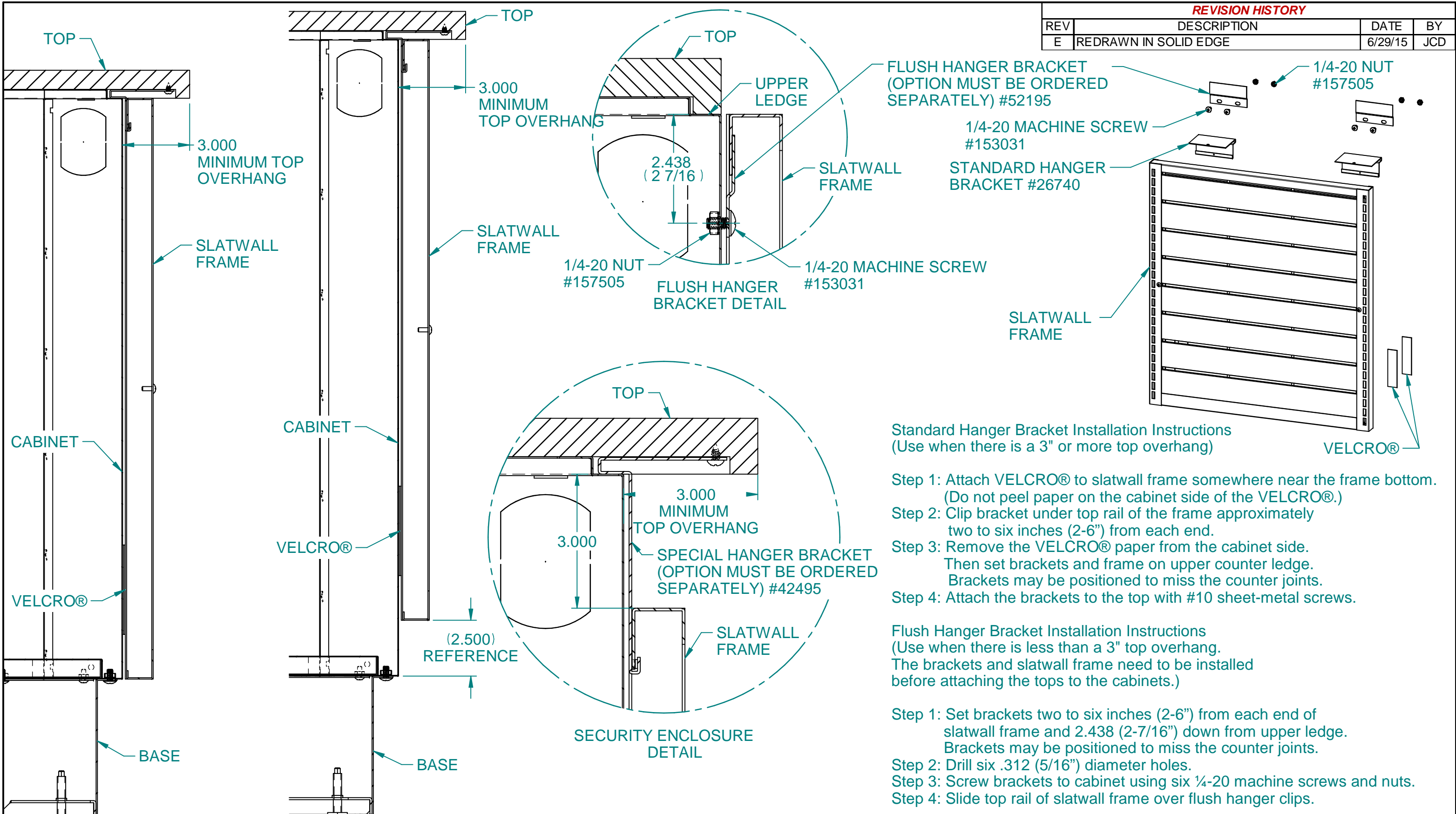


REVISION HISTORY			
REV	DESCRIPTION	DATE	BY
E	REDRAWN IN SOLID EDGE	6/29/15	JCD



**Standard Hanger Bracket Installation Instructions**  
(Use when there is a 3" or more top overhang)

- Step 1: Attach VELCRO® to slatwall frame somewhere near the frame bottom. (Do not peel paper on the cabinet side of the VELCRO®.)
- Step 2: Clip bracket under top rail of the frame approximately two to six inches (2-6") from each end.
- Step 3: Remove the VELCRO® paper from the cabinet side. Then set brackets and frame on upper counter ledge. Brackets may be positioned to miss the counter joints.
- Step 4: Attach the brackets to the top with #10 sheet-metal screws.

**Flush Hanger Bracket Installation Instructions**  
(Use when there is less than a 3" top overhang. The brackets and slatwall frame need to be installed before attaching the tops to the cabinets.)

- Step 1: Set brackets two to six inches (2-6") from each end of slatwall frame and 2.438 (2-7/16") down from upper ledge. Brackets may be positioned to miss the counter joints.
- Step 2: Drill six .312 (5/16") diameter holes.
- Step 3: Screw brackets to cabinet using six 1/4-20 machine screws and nuts.
- Step 4: Slide top rail of slatwall frame over flush hanger clips.

<p>These designs are proprietary information, property of ROYSTON LLC. They shall not be copied or duplicated in any manner without prior written consent.</p>	REF # 86077		ROYSTON LLC ONE PICKROY ROAD JASPER, GA 30143 (770)735-3456	
	<p>Tolerance Unless Otherwise Noted .XXX = ± .015 .XX = ± .030 Angles = ± 1° Hole Dia. = ± .003</p>		<p>NEXT STEP <b>SHIP</b></p>	PART DESCRIPTION ISHT,FR,SW,CM
	ENG SB	DRAWN BY SB	DATE 10/05/00	PART # 30690
				REV E