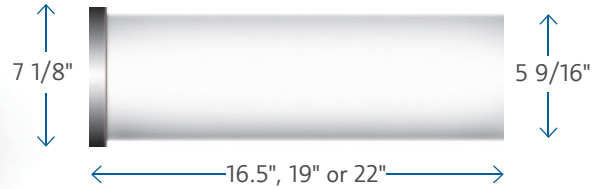
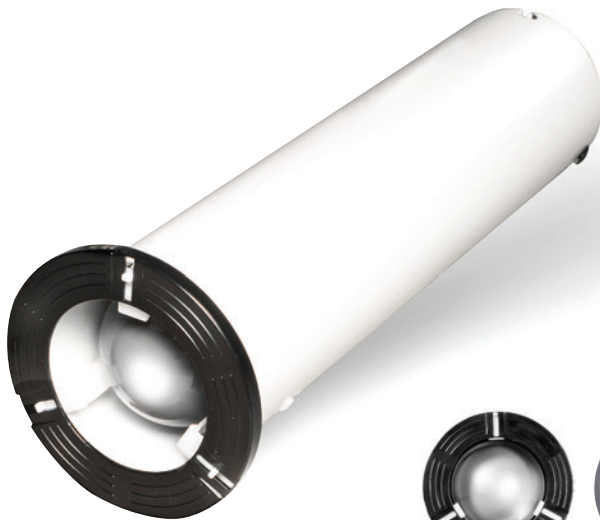
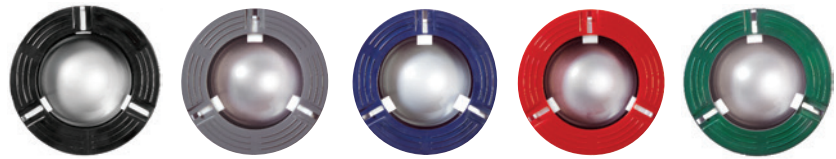


CUP DISPENSERS



Note: Opening in counter should be 5 7/8" to accept cup dispenser.



DESIGNED FOR RELIABILITY

- Engineered with durability in mind. Materials and design will withstand the harshest conditions.
- Designed to always dispense cups one at a time. Dispenser prevents cups from becoming stranded in the back of the unit or falling on the floor.
- Dispenser trim rings are available in five colors to complement the look of your store.

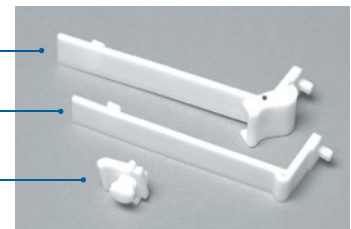
FULLY ADJUSTABLE

- Three-point adjuster fingers allow you to use a single-size dispenser for a wide range of cup sizes.
- No tools or adapters are needed to adjust the dispenser to hold a new cup size.
- Use with paper, plastic and foam cups.

TOGGLE FINGER

STANDARD FINGER

JUMBO FINGER



TOGGLE FINGER 57138 - For use with CD170T, CD170
Toggle adjuster fingers are engineered for foam cups with thin or curved lips and available on the CD170T or can easily be retrofitted on existing CD170 units.

STANDARD FINGER 85878 - For use with CD170

JUMBO FINGER 94104 - For jumbo dispenser, use with CD172

CATALOG NO.	DISPENSER DESCRIPTION	CUP SIZES
CD170	STANDARD adjuster fingers	8 - 64oz. capacity (up to 4.5" diameter)
CD170T	TOGGLE adjuster fingers	8 - 64oz. capacity (up to 4.5" diameter)
CD172	JUMBO trim ring and adjuster fingers	44 - 64oz. capacity (4.5" - 5" diameter)

