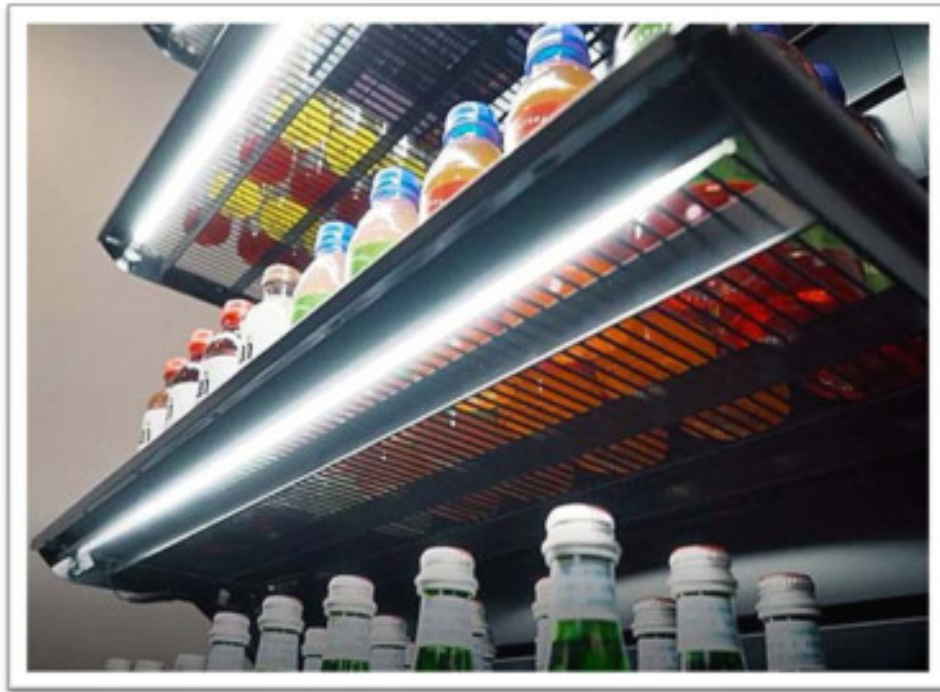


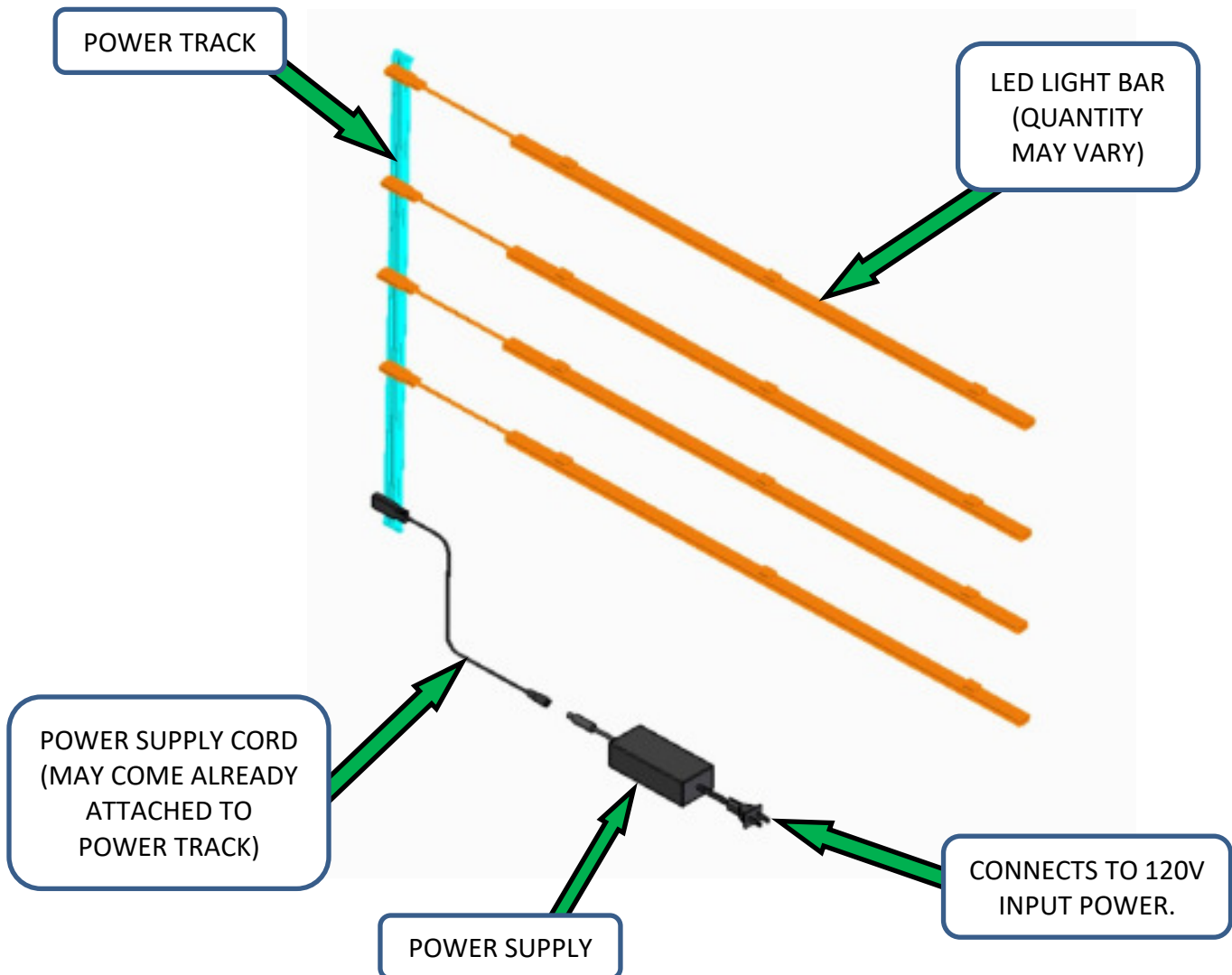
# LED LIGHTING INSTALLATION for SHELVES & CABINETS



## Table of Contents

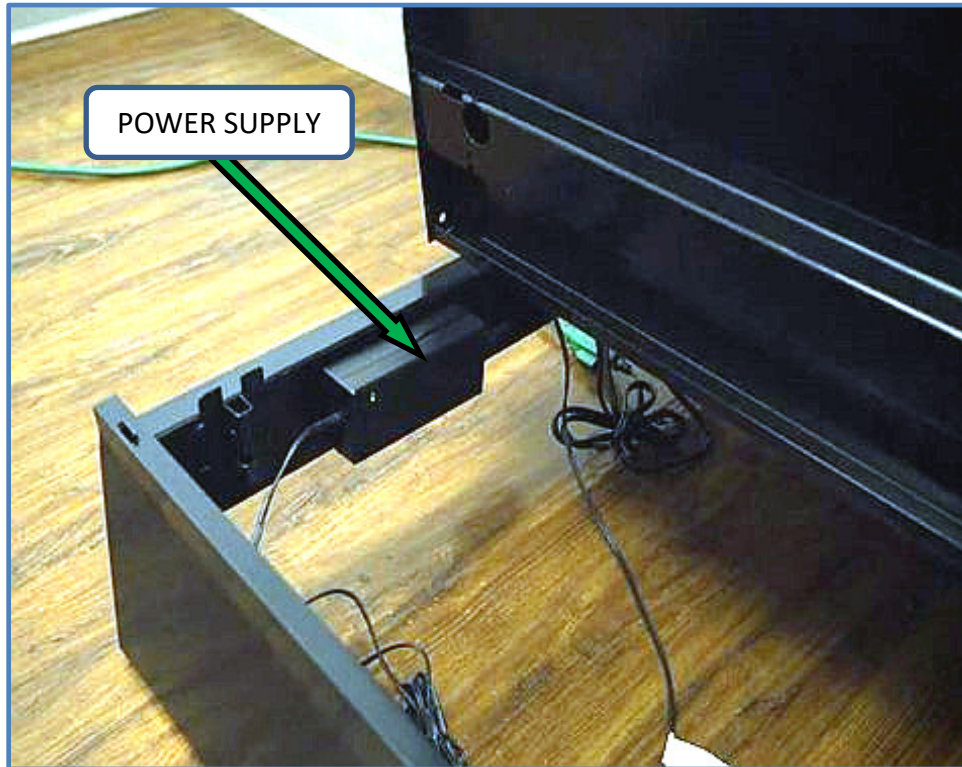
LIGHTING COMPONENTS DIAGRAM.....	2
INSTALL POWER SUPPLY .....	3
INSTALL POWER TRACK .....	4
INSTALLING LIGHT BARS .....	5
METAL SHELVES.....	5
WIRE SHELVES .....	5
SOLID SURFACE TOPS.....	6
CONNECT LED LIGHT BARS TO POWER TRACK .....	6
TROUBLE SHOOTING .....	7
SERVICE PARTS LIST .....	8
CONTACT INFORMATION.....	9

## LIGHTING COMPONENTS DIAGRAM



## INSTALL POWER SUPPLY

1. Lift the base shelf and place the power supply in the area beneath the base shelf. Velcro strips are provided to attach the power supply to the base.



## INSTALL POWER TRACK

1. Attach the power track to the inside back panel of the unit.  
If shelves are already in place, slide the power track behind existing shelving and lower until just above base deck. The power track is supplied with magnetic or VHB tape backing for attachment.
2. Connect the power cord to the power supply and the power track, routing the cord from underneath the base shelf up to the power track.

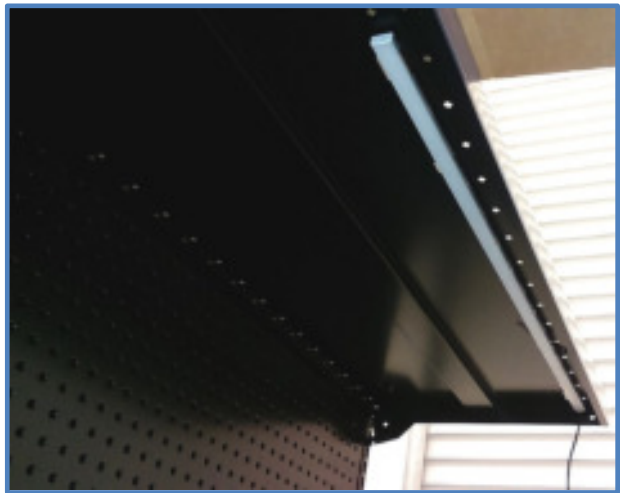
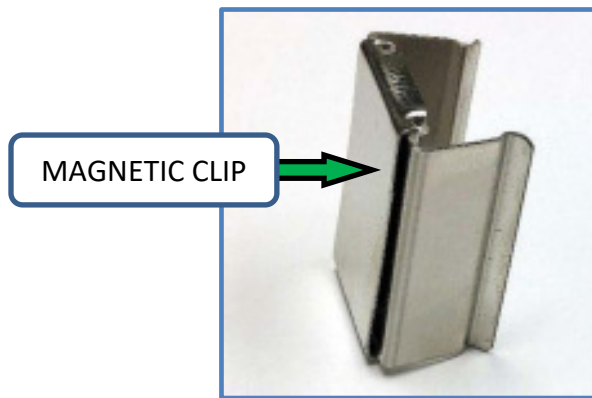


## INSTALLING LIGHT BARS

The LED light bars come with three options for attachment. Magnetic clips are provided for metal shelves. Metal clips are provided for attachment to wire shelves and solid surfaces.

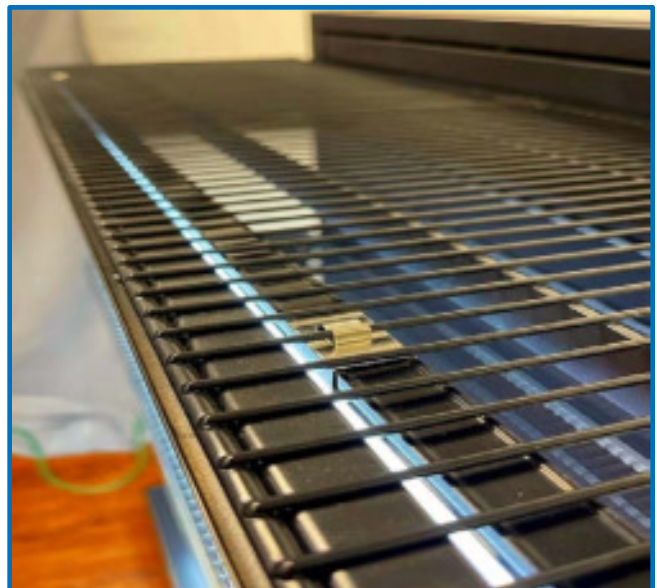
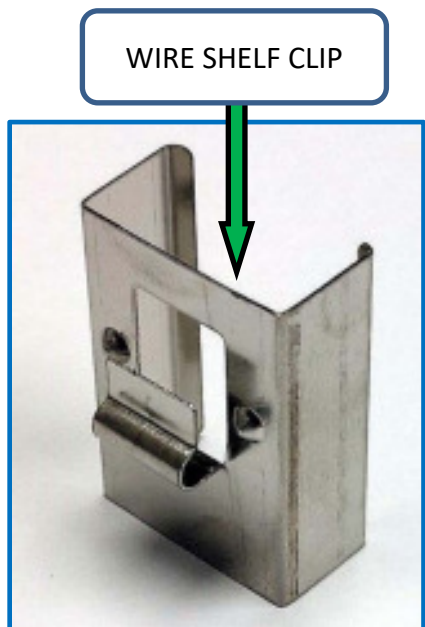
### METAL SHELVES

1. For installation on Metal shelves and surfaces, attach Magnetic clips to Light Bar.
2. Attach the LED light bar underneath shelving or cabinet using the magnetic clips.



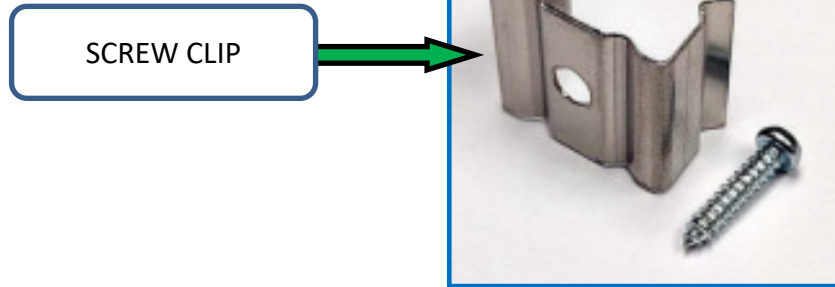
### WIRE SHELVES

1. For installation on wire shelves, attach the provided Metal clips to the Light Bar.
2. Attach Light Bar to wire shelf.



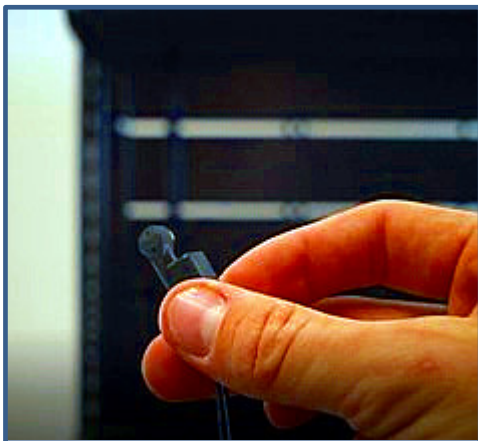
## SOLID SURFACE TOPS

1. For wood surface tops, install the clips using a Phillips head screwdriver and the provided screw.
2. Attach the LED light bar to the underside of the solid surface top using the provided clips.



## CONNECT LED LIGHT BARS TO POWER TRACK

1. Place the twist-lock connector on the Light Bar power cord into the groove in the power track. The wire should be perpendicular to the power track and facing away from the guard rail.
2. Rotate the twist-lock plug from the three o'clock position to the six o'clock position, so that the wire exit is running parallel to the power track. The guide on the connector should be on the opposite side of the guard rail.

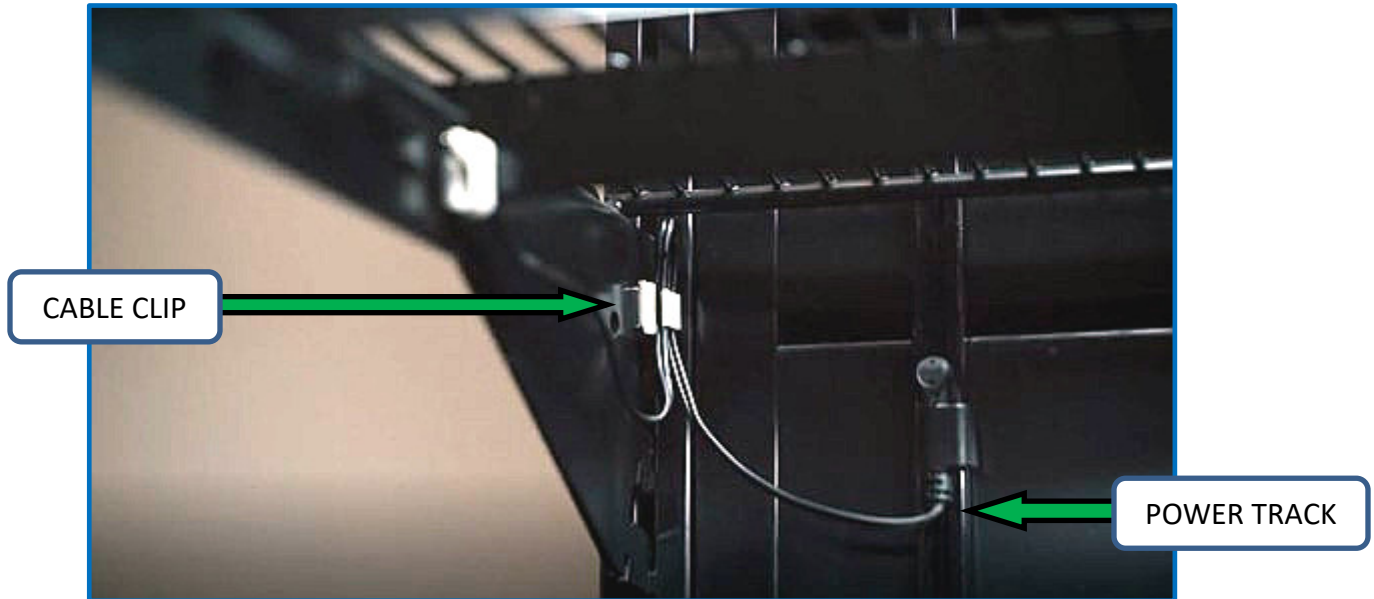


TWIST-LOCK AT  
THREE O'CLOCK  
POSITION

TWIST-LOCK AT  
SIX O'CLOCK  
POSITION



3. Route the light bar's power cord to the power track.
4. Dress the power cords using the provided wire ties and cable clips to secure the cords and protect them from damage.



## TROUBLE SHOOTING

If none of the strips are illuminated, confirm that the outlet is active. Next, ensure that the input connector is properly attached to the power strip and that the power cord is plugged into the input connector.

If only one LED strip is not functioning, inspect the power out connector for that LED. Ensure it is properly attached to the power strip and that the LED is plugged into the output connector.

**IMPORTANT NOTE:** Each transformer/power strip combination is designed to power 12 LED strips at MOST. While the transformer is designed with built-in overload protection, too many LED strips will eventually cause the transformer to fail and reduce the life of your system.

## SERVICE PARTS LIST

### LED LIGHT BARS

SHELF WIDTH	ROYSTON PART NO.
60"	72032485
48"	72032486
42"	72032487
36"	72032487
32"	72032489
30"	72032489
28"	72032489
24"	72032488
18"	72032490
12"	72032491

### POWER DISTRIBUTION TRACKS

ROYSTON PART NO.	DESCRIPTION
72032383	PKG,TRK.PWR,LED,24.0
72032446	PKG,TRK.PWR,LED,27.0
72032447	PKG,TRK.PWR,LED,33.0
72032448	PKG,TRK.PWR,LED,39.0
72032450	PKG,TRK.PWR,LED,45.0
72032451	PKG,TRK.PWR,LED,51.0
72032452	PKG,TRK.PWR,LED,57.68
72032453	PKG,TRK.PWR,LED,63.0
72032454	PKG,TRK.PWR,LED,69.0
72032455	PKG,TRK.PWR,LED,75.0

### POWER SUPPLIES (LED Drivers)

ROYSTON PART NO.	DESCRIPTION
70035031	POWER SUPPLY, 24W
72003249	POWER SUPPLY, 60W
72009228	POWER SUPPLY, 96W



## CONTACT INFORMATION

**If you have any questions about the contents of this manual, please do not hesitate to contact us at**

*1-800-334-1766, Ext. 3288, Mike Davis. Your dedicated  
Royston customer service team is ready to help you.*